

Spring 2023

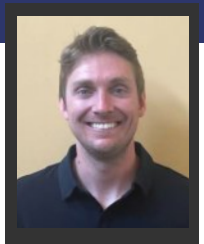
WELCOME NEW MEMBERS

Let's celebrate with those who have taken steps
on their spiritual journeys by becoming members of Central today!



Ryan Bankert

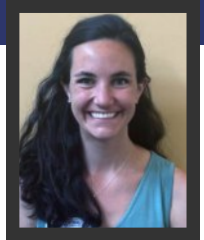
Ryan is a national account manager at Stanley Black & Decker. Seeking a church community close to home, he and his family were drawn to Central's excellent children's/youth program and contemporary worship service. Ryan's faith journey began in his childhood, but it was during a Newsboys concert in high school that he had a true "I want to go all-in with Jesus" moment and learned what true worship is. With a passion for serving others, Ryan brings his dedication to Central, having previously served on a missions planning team and as a small group leader. He is interested in joining a Central small group focused on young families and young couples. Ryan looks forward to connecting with a community of believers, involving his children (Owen, Cole, and Lily) in the youth ministry, and sharing with others his love for running, golfing, and cheering on the Baltimore Orioles and Ravens.



www.centralpc.org/membership

Kathleen Bankert

Kathleen is a physician assistant in Women's Health at Johns Hopkins. Her journey to Central was inspired by the wonderful reputation of the community and its vibrant children's ministry. Kathleen's faith in Jesus Christ as her Lord and Savior has been a source of strength and gratitude throughout her life. As a busy working mom of three children, she is eager to find ways to prioritize her faith and relationship with Jesus. Kathleen currently serves as a teacher in the toddler and 2's class, sharing her love for children and spreading the love of Jesus to them. She is excited about joining a women's group or finding a mentor to navigate the challenges of life and deepen her faith. With a heart full of love for her family, Kathleen looks forward to making Central their church home, raising her children (Owen, Cole, and Lily) within a supportive community, and fostering a strong connection with God.



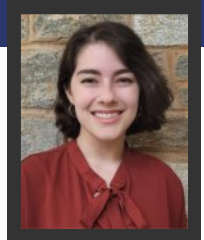
John Bryan

John is a bank examiner for the FDIC and a lifelong follower of Christ. Having grown up in the church, John embraced his faith at a young age and has remained steadfast in his commitment to Jesus. He has actively served in various capacities, including youth ministry, ushering, and leading music. An avid Orioles fan, John's love for sports is matched by his passion for nurturing his spiritual journey. Eager to expand his faith community, he is thrilled about joining a small group at Central where he can forge new connections and deepen his relationship with God. John looks forward to embarking on this next chapter of spiritual growth and contributing to the vibrant tapestry of Central's community with a heart full of enthusiasm.



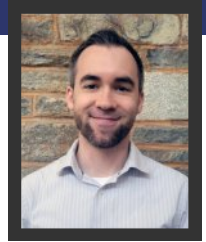
Madeline Connors

Madeline is a teacher at Bryn Mawr School. She discovered her faith in Jesus during her late high school years. Despite not being raised in a Christian home, she felt drawn to faith and began attending various denominations and CRU at Towson University. In 2015, she attended Central for the first time and continued sporadically during her college years. However, in September 2022, Madeline decided to fully commit to Central. She is involved in a Central young adult group and enjoys singing, attending festivals, and watching movies from the 1940s. Madeline looks forward to reaffirming her faith in a warm and authentic community at Central while building lifelong relationships.



Jeff Hosier

Jeff is a high school music teacher. He grew up in a Presbyterian Church and loved the support he felt from his home church. While attending college at Towson University, he would make occasional visits to Central, and is part of a Central young adult group. He enjoys making music, cooking, and trying new experiences, and he is looking forward to connecting with the Central community and building new relationships.



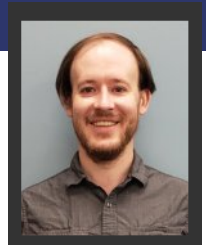
Mary Keithley

Mary is a controller for a small business and was introduced to Central through Elder Neil Pohlhaus. Although she was baptized at Mt. Vernon Methodist Church at a young age, Mary did not grow up in the church. At the age of 21, she came to know Jesus through a Baptist Church on the Eastern Shore. Now working full-time, Mary seeks to fill her life with "God things" and apply scripture to her life experiences. She is interested in being part of a small group at Central as she continues to deepen her faith journey.



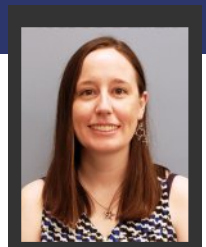
Nathan McNew

Nathan is a math professor at Towson University. He found his way to Central in 2015 after moving to Towson and exploring various churches in the area. Nathan's faith journey began in his upbringing, actively participating in student ministries during his college and grad school years. Nathan and his wife Sierra are part of a Central young adult group and serves on the tech team, operating the soundboard during the contemporary service. With a passion for connecting with others, he looks forward to meeting new people and finding new ways to contribute and engage within the vibrant community of Central. In his free time, he enjoys working in coffee shops, following Colorado sports teams, and playing board games.



Sierra McNew

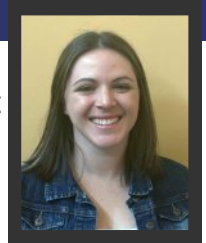
Sierra McNew is a pharmacist with a passion for creative writing and is currently pursuing a master's degree in the field. Her journey of faith began during challenging health issues in graduate school, leading her to deepen her relationship with Jesus Christ. Sierra's desire to put down roots in Baltimore both personally and spiritually brought her



to Central, where she found a welcoming community and opportunities to serve in ministries such as Storm, Whirlwind, and the tech team. She attends a Central young adult group with her husband Nathan. As a member, she looks forward to engaging in fellowship and utilizing her talents to contribute to worship and youth ministry. Beyond her professional and spiritual pursuits, Sierra is an avid book lover and enjoys discussing literature and writing.

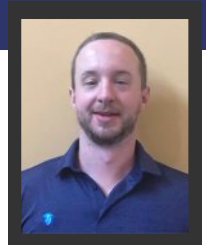
Jamie VanRensselaer

Jamie is an IT project manager for her family's company. She began attending Central while studying at Goucher College and has remained connected through small groups and serving in Storm. Jamie was raised in the church and has grown into owning her faith as an adult. She attends a Central young adult group, and loves to share her love of dancing. She is excited about continuing to serve high school students in Storm while growing within a faith community at Central.



Nick VanRensselaer

Nick is a software engineer. He started attending Central with his wife Jamie when they were in college. Having attended a Catholic School and been raised in the Christian faith, Nick was previously involved with Mays Chapel UMC. After getting married, he and Jamie decided to make God a central part of their life together and continue attending Central. Nick is part of a Central young adult group, and he has a passion for sports. He is looking forward to joining and growing within the faith community at Central.



BEGIN YOUR JOURNEY TO MEMBERSHIP

Membership is for anyone who has committed themselves to a relationship with Jesus, and would like to publicly make a commitment to join in Central's mission of
"Moving people toward Christ."

Visit www.centralpc.org/membership or Connection Central to learn more.